

关注我们 ABOUT US



帕普生 | 单螺杆泵

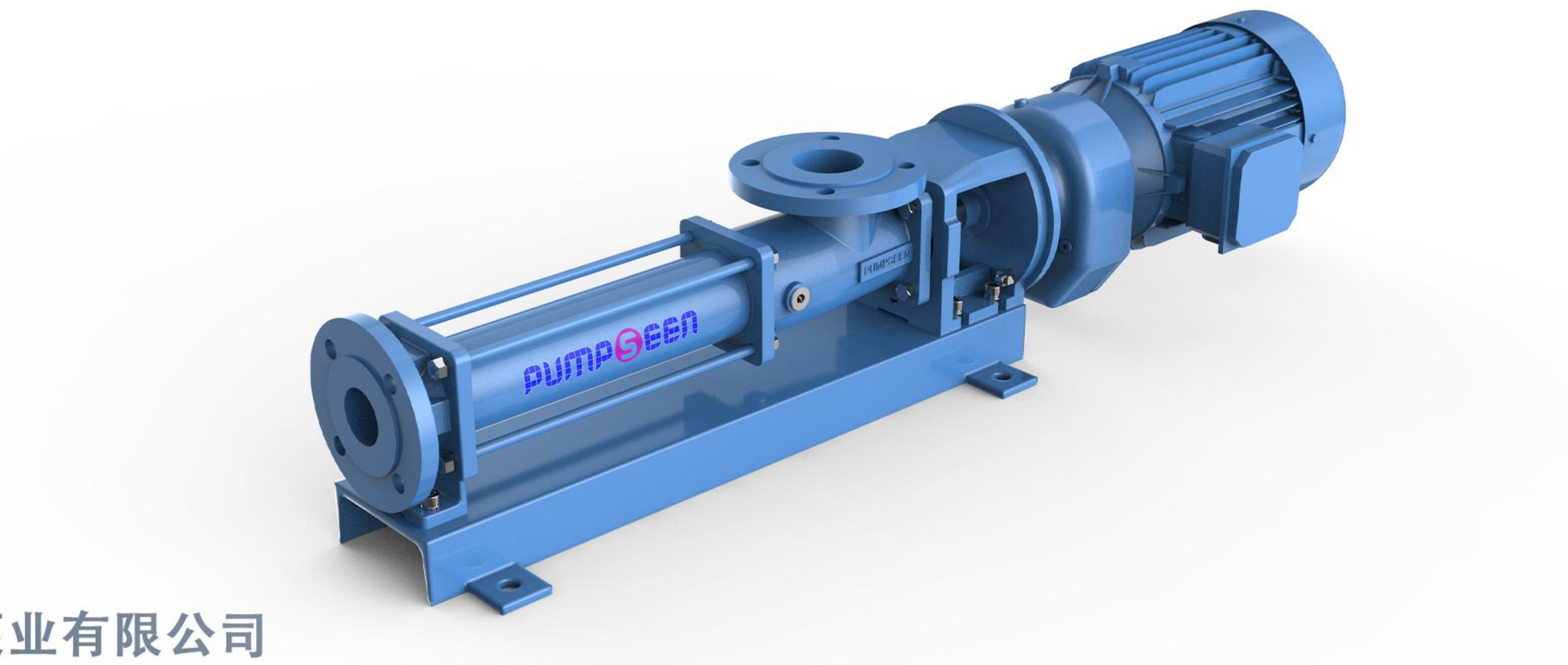
PROGRESSIVE CAVITY PUMP

专注于提供全方位流体输送技术
FOCUSING ON PROVIDING
COMPREHENSIVE FLUID DELIVERY TECHNOLOGY

帕普生泵业有限公司
PUMPSEEN PUMPS CO.,LTD

电话: 010-6240 5101
官网: www.pumpseen.com
邮箱: pumpseen@163.com

contact: 010-6240 5101
website: www.pumpseen.com
email: pumpseen@163.com



帕普生泵业有限公司

PRODUCT INTRODUCTION

产品介绍

单螺杆泵

PROGRESSIVE CAVITY PUMP

帕普生PNS系列单螺杆泵是帕普生的通用泵型。该系列泵型适用于大部分行业，用来输送各种粘度范围及不同含固率的介质。该泵型的通用性和其他性能优势，保障了整泵系统经济可靠地运行。

The Pumpseen PNS series progressive cavity pump is a universal pump type of Pumpseen. This series of pump models is suitable for most industries and is used to transport media with various viscosity ranges and different solid contents. The versatility and other performance advantages of this pump type ensure the economical and reliable operation of the entire pump system.

工作原理

OPERATING PRINCIPLE

螺杆泵（单螺杆泵）是一种内啮合的密闭式螺杆泵，属转子式容积泵。主要工作部件由具有双头螺旋空腔的定子和在定子腔内与其啮合的单头螺旋螺杆即转子组成。

当输入轴通过万向节驱动转子绕定子作行星回转时，定子与转子就连续啮合形成数个单独的密封腔，这些密封腔容积不变地作匀速轴向运动，输入介质从吸入端流经定子-转子输送至压出端。

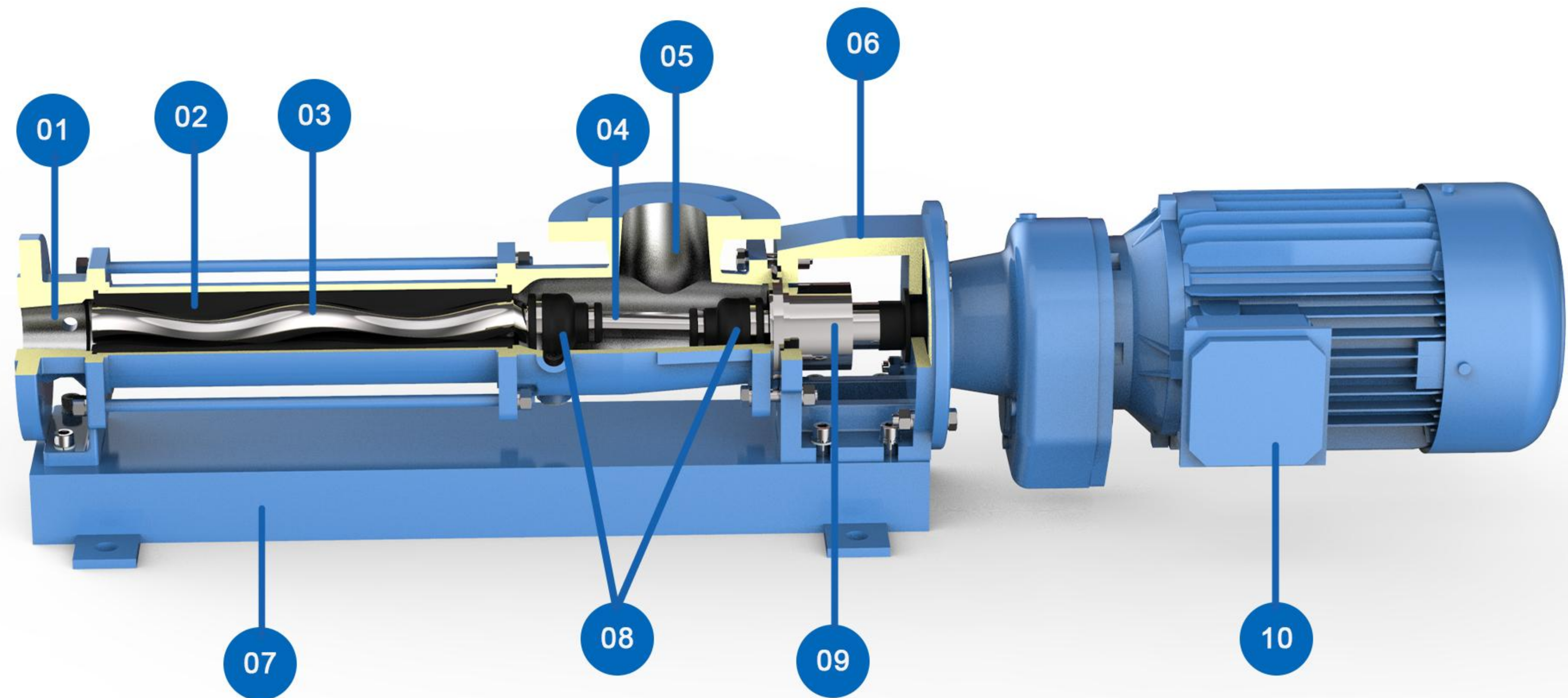
Screw pump progressive cavity pump is a closed screw pump with internal meshing, belonging to the rotary displacement pump. The main working components consist of a stator with a double headed spiral cavity and a single headed spiral screw or rotor that meshes with it inside the stator cavity.

When the input shaft drives the rotor to rotate around the stator through a universal joint, the stator and rotor continuously mesh to form several separate sealing chambers. These sealing chambers move axially at a constant speed, and the input medium is transported from the suction end through the stator rotor to the extrusion end.

结构

STRUCTURE

- | | | | |
|----|---------------------|----|-------------------------|
| 01 | 排出口
Outlet | 06 | 电机支架
Motor bracket |
| 02 | 定子
Stator | 07 | 底座
Baseframe |
| 03 | 转子
Rotor | 08 | 万向节
Universal Joint |
| 04 | 联轴杆
Coupling Rod | 09 | 机械密封
Mechanical Seal |
| 05 | 吸入口
Inlet | 10 | 减速电机（驱动）
Gear Motor |



PRODUCT FEATURES
产品特点

输送5高介质
CONVEYING 5 HIGH-MEDIUM

输送高浓度介质，含固率高达75%；
输送高粘度介质，粘度高达100000CP；
输送高磨损性介质；
输送高腐蚀性介质；
输送高扬程介质；

Transport high concentration media with a solid content of up to 75%;
Transporting high viscosity media with a viscosity of up to 100000cp;
Conveying high wear media;
Transporting highly corrosive media;
Transporting high lift media;

3大能力
3 MAJOR ABILITIES

自吸能力，自吸可达8.5m；
混输能力，可实现气、液、固体多项混输；
计量能力，流量和转速成正比，计量精度达1%；

Self suction capacity, up to 8.5m self suction;
Mixed transportation capability, capable of achieving multiple mixed transportation of gas, liquid, and solid;
Measurement ability, flow rate and speed are directly proportional, with a measurement accuracy of 1%;

4大机械特性
4 MECHANICAL PROPERTIES

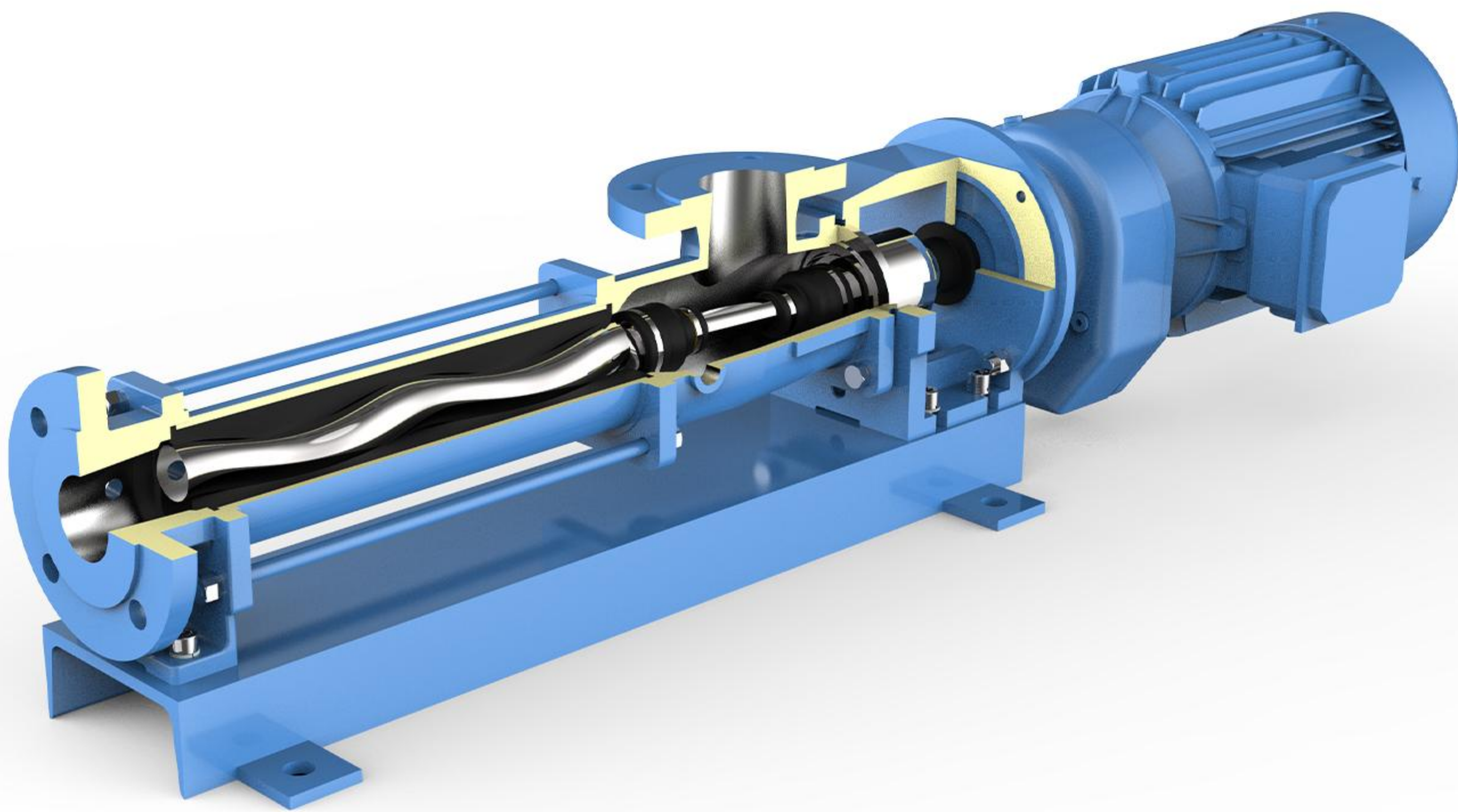
低噪音、低震动，65db以下；
容积效率达85%以上；
低剪切、低脉动；
节省能源；

Low noise, low vibration, below 65dB;
The volumetric efficiency reaches over 85%;
Low shear and low pulsation;
Energy saving;

UNIVERSAL PROGRESSIVE CAVITY PUMP
通用型螺杆泵

帕普生通用型单螺杆泵是一种常规配置螺杆泵，其流量与转速成正比。结构紧凑，体积小，维修简便。对介质的适应性强，流量平稳，压力脉动小，自吸能力高。广泛应用于市政环保、化工、石油石化、餐厨垃圾、印刷造纸、食品饮料等行业。

Pumpseen universal sprogressive cavity pump is a conventional configuration screw pump, the pump is proportional to the flow and speed. Compact structure, small size, and easy maintenance. Strong adaptability to media, stable flow rate, small pressure pulsation, and high self suction capacity. Widely used in industries such as municipal environmental protection, chemical industry, petroleum and petrochemical industry, kitchen waste, printing and papermaking, food and beverage, etc.



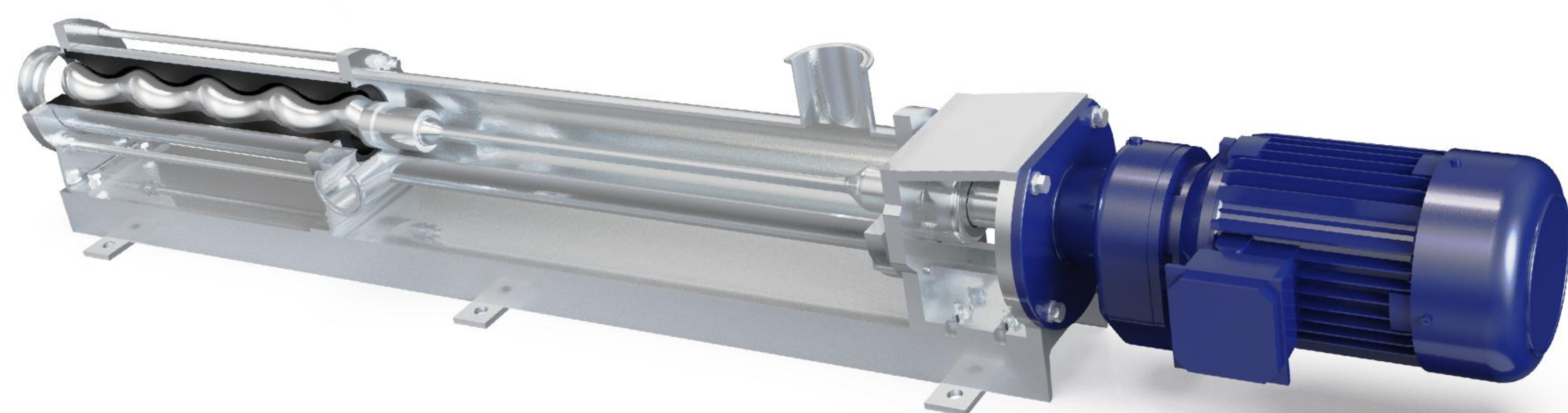
FLEXIBLE ROD SCREW PUMP 挠性轴螺杆泵



帕普生挠性轴螺杆泵符合卫生型设计，挠性轴取代带有万向节连接的连轴杆。该设计便于更换转子、挠性轴、驱动轴，在无需拆卸挠性轴的情况下，确保了CIP 和COP 无残留清洗。挠性轴材质采用不锈钢/钛合金，被广泛应用于锂电浆料输送中。



Pumpseen flexible rod progressive cavity pump conforms to a hygienic design, and the flexible shaft replaces the connecting rod with a universal joint connection. This design facilitates the replacement of rotors, flexible shafts, and drive shafts, ensuring no residual cleaning of CIP and COP without the need to disassemble the flexible shaft. The flexible shaft material is made of stainless steel/titanium alloy, which is widely used in the transportation of lithium battery

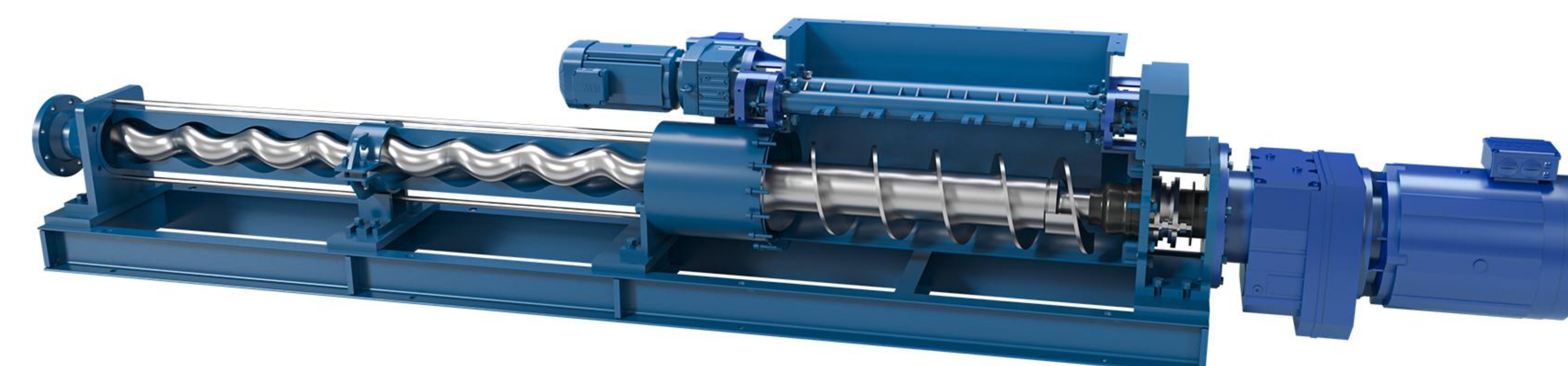


SCREW PUMP WITH FEED HOPPER 带螺旋进料器单螺杆泵



帕普生带螺旋进料器单螺杆泵带螺旋进料器、独立驱动破桥装置，可以稳定输送高粘度、易搭桥介质，破桥装置采用独立的驱动系统，可灵活调节转速，不受泵转速影响，可保证介质稳定持续流动，拆卸方便，维护简单快捷。

Pumpseen progressive cavity pump with feed hopper and independent drive bridge breaking device can stably transport high viscosity and easily bridged media. The bridge breaking device adopts an independent driving system, which can flexibly adjust the speed and is not affected by the pump speed, ensuring stable and continuous flow of the media. It is easy to disassemble and easy to maintain.



INDUSTRY APPLICATIONS

行业应用

① 市政环保

MUNICIPAL ENVIRONMENTAL PROTECTION

- 生活污水处理

Domestic sewage treatment
- 工业污水处理

Industrial wastewater treatment
- 污泥脱水

Sludge dewatering
- 化学剂投加

Chemical dosing
- 废气脱硫

Desulfurization for Waste Gases
- 油水分离

Oil-water separation

② 石油石化

PETROLEUM AND PETROCHEMICAL

- 原油输送

Crude oil transportation
- 污水处理

Sewage disposal
- 化工制剂

Chemical products
- 泥浆处理

Mud treatment
- 卸车泵

Unloading pump
- 钛白粉浆料

Titanium dioxide slurry

③ 化工

CHEMICAL INDUSTRY

- 染料、涂料

Dyes and Coatings
- 油墨、乳胶

Printing ink、latex
- 聚合物

Polymer
- 复合材料

Composite
- 纸浆

Paper pulp
- 酸碱性溶剂

1

INDUSTRY APPLICATIONS

行业应用

④ 食品饮料

FOOD AND BEVERAGE

- 乳制品

Dairy products
- 酒类酿造

Brewing of alcoholic beverages
- 食品灌装

Food filling
- 果冻、糖浆

Jelly, syrup
- 果汁饮料

Juice drinks
- 添加剂、调味剂

Additives and seasonings

⑤ 生物制药

BIOPHARMACEUTICALS

- 药剂输送

medicament piped
- 细胞悬浮液

Cell suspension
- 胰岛素

Insulin
- 糖浆

syrup
- 生物农药、兽药

Pesticides and veterinary drugs

⑥ 餐厨垃圾

RESTAURANT GARBAGE

- 餐余垃圾

Food waste
- 厨余垃圾

Kitchen waste
- 垃圾分拣工位

The Quest to Glory
- 垃圾制浆工作

Garbage pulping
- 离心机工位

Centrifuge station
- 酸碱性溶剂

Acid-base solvents

APPLICATION CASES
应用案例

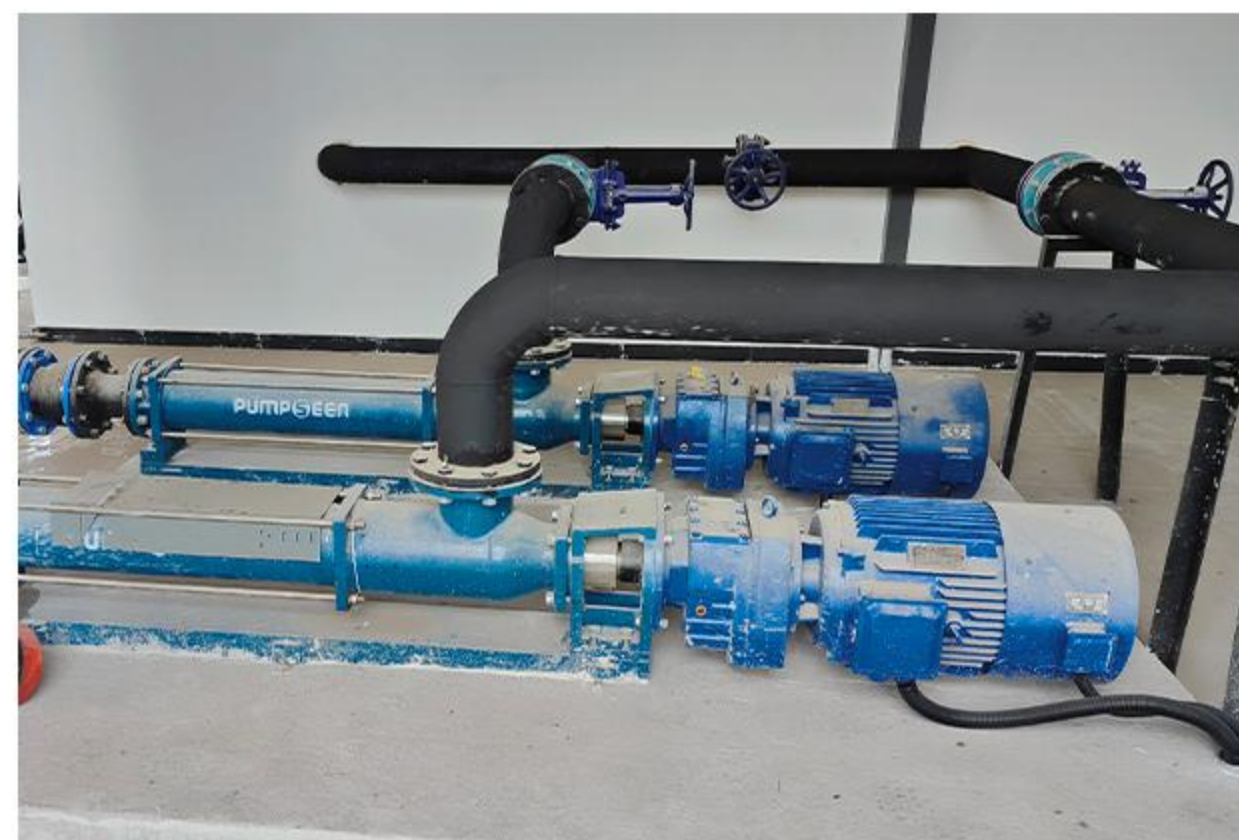
时代桃源餐厨项目
FAFAIRY LAND Kitchen waste project



南通餐厨垃圾项目
Nantong Kitchen waste project



九龙园污水处理厂
Kowloon park Sewage Treatment Plant



通州污水处理厂
Tongzhou Sewage Treatment Plant



宜宾污泥处理项目
Yibin sludge treatment project



中环水务市政项目
CENTRAL WATER Municipal project



APPLICATION CASES
应用案例

林鸣祥锂电项目
Lithium battery project



三一集团锂电项目
SANY Lithium battery project



比亚迪锂电项目
BYD Lithium battery project



西安烯科化工项目
XI'AN ENKE chemical projects



瑞恒新材化工项目
RUIHENG NEW MATERIAL chemical projects



山东化工项目
Shandong chemical projects

